

DISCOVERY COLLEGE

PART OF YMCA PLYMOUTH

Prospectus



START YOUR
JOURNEY



discoverycollege.co.uk

YMCA

CONTENTS

Welcome	3
About Us	4
What People Say	6
Business	8
Childcare	10
Health & Social Care	12
Performing Arts	14
Public Services	16
Sport	18
Travel & Tourism	20
Employability	22
Student Life	23-25
Finding Us	26
Finance & Fees	26
How to Apply	27



Find us on Facebook: [/DiscoveryCollegePlymouth](#)

Follow us on Twitter: [@DiscoverYMCA](#)

discoverycollege.co.uk

01752 761011 | info@discoverycollege.org.uk

Welcome

At Discovery College, we believe in more than just qualifications. Studying at Discovery College is the start of a journey towards your dream career and adult life - where your success is our top priority. We strongly believe this journey should be exciting, inspiring and memorable.

As a modern, forward-thinking college, we're free from the formalities of a school. Plus, being a smaller college, we provide a uniquely supportive community, where you'll get the dedicated time you deserve with our tutors. Discovery college is a place you can truly belong, contribute and thrive.

Our fun, engaging and career-focused courses will equip you with the skills you need to take that next step; whether that's a job, apprenticeship, or a place at university. I hope you decide to start your journey with us, and I look forward to welcoming you soon.

– Tom Lavis
CEO, Discovery College



Discover a college with a difference..

Discovery College is an award-winning, modern college with a proud history. Founded in 2010 as a response to today's education needs, we were formed out of YMCA Plymouth's education provision; which had been delivering community education in the city for over 100 years.

The guiding principle behind our inception was '*learning beyond the classroom.*' This means being free from old teaching styles, making courses practical and fun, within a friendly and supportive environment. This approach, delivered by our team of expert tutors and combined with our high academic standards make Discovery College a unique place, where students of all backgrounds can learn, achieve and succeed.



WE ARE SUPPORTIVE
WE ARE CAREER FOCUSED
WE ARE PRACTICAL
WE ARE FUN



Teaching Excellence

- We provide the highest vocational standards
- We have expert & industry experienced tutors
- We deliver high quality accredited courses
- We have a proven track record of success



A Supportive Environment

- We treat all students with respect & care
- We are inclusive and celebrate diversity
- We foster togetherness & community
- We create a safe space for everyone



Forward Thinking

- We are free from outdated teaching styles
- We keep our courses relevant to the workplace
- We use modern technology to enhance learning
- We treat you like an adult

Don't just take our word for it...



"The staff are really easy to get along with and always approachable"

Dan Bell, Public Services
Now: **Royal Marines**



"Without the support I got at Discovery, I wouldn't be where I am now"

Hannah Taylor, Childcare
Now: **Nursery Manager**



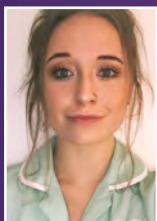
"My tutors have had a real impact on my life and helped excel my sports career"

Lagi Tuima, Sport
Now: **England Rugby Player**



"The staff actually care. They spend as much time as you need to help you with any problems"

Tom Buttriss, Business
Now: **Commercial Manager**



"Discovery College helped me believe in myself and achieve the qualifications I needed"

Millie Wheeler, BTEC Health & Social Care
Now: **Health Care Assistant, Livewell SW**



98%

Student satisfaction

100%

Of our students that applied for university achieved their first choice



100%

Of students get work placements in the community

80%

Of students benefit from extra curricular activities



Business



BTEC National Extended Diploma in Business

Level	Duration	Entry Requirements	Type
3	2 Years	4 GCSEs (A-C / 9-4) Or Relevant Qualification	Full-time

Overview

This practical and exciting course will prepare you for the wide variety of career opportunities in the world of business and management, as well as gaining knowledge relevant to all aspects of business.

During the course you will engage in practical assignments, team tasks, trips to businesses and undertake work placements. The BTEC qualification is equivalent to 3 A-Levels and offers excellent pathways for progression.

What Will I Study?

- ▶ Principles of Management
- ▶ International Business
- ▶ Marketing Campaigns
- ▶ Personal & Business Finance
- ▶ Managing Events
- ▶ Recruitment & Selection



Career Pathway

Successfully completing this programme will enable you to progress to university and study in a range of related undergraduate degrees such as Business Management, International Business and Marketing. You'll also be able to gain entry-level employment in a variety of business settings.

Careers you can aspire to with this qualification:

- ▶ Senior & Management Roles in Business
- ▶ Marketing
- ▶ Human Resources
- ▶ Sales & Retail
- ▶ Managing Your Own Business

**Find out more
and apply today:**

discoverycollege.co.uk



*"I wouldn't be
where I am now
if it wasn't for
Discovery College"*

- Shannon, BTEC Business
Now: Account Manager,
Continental

Childcare



COURSES:

Level	Duration	Entry Requirements	Type
Certificate in Working with Children in Early Years and Primary Settings			
2	1 Year	4 GCSEs (D-G / 3-1) Or Relevant Qualification	Full-time
NCFE CACHE Technical Certificate & Diploma in Childcare & Education (EYE)			
3	2 Years	4 GCSEs (A-C / 9-4) Or Relevant Qualification	Full-time

Overview

Our childcare courses are made up of exciting projects and practical assignments that will give you the skills and knowledge which are critical to working within the childcare sector.

Additionally, you will improve your skills in leadership, team-building and communication to help you gain employment. Both courses are delivered by friendly tutors with years of experience within the sector. Their support and knowledge will guide you through all areas of study and help you make the right choices for your career.

What Will I Study?

Both courses cover a range of relevant topics including:

- ▶ Safeguarding and Welfare
- ▶ Maintaining Positive Relationships
- ▶ Supporting Child Development
- ▶ Paediatric First Aid
- ▶ Health & Safety and Food Hygiene
- ▶ Outdoor Education (Forest School)



Career Pathways

Successfully completing these courses will prepare you for study at a higher level. Level 2 students can progress to Level 3 and Level 3 students can progress to university. Equally, both qualifications will help you find entry-level employment within the sector.

Careers you can aspire to with these qualifications:

- ▶ Nursery Worker
- ▶ Childcare Assessor
- ▶ Paediatric Nurse
- ▶ Forest School Leader
- ▶ Children's Centre Play Worker
- ▶ Au Pair

**Find out more
and apply today:**

discoverycollege.co.uk



"Discovery College gave me the skills and knowledge I needed for my career"

– Gemma, CACHE Childcare
Now: Childcare Practitioner

Health & Social Care



COURSES:

Level	Duration	Entry Requirements	Type
BTEC Level 1/2 First Diploma in Health & Social Care			
2	1 Year	4 GCSEs (D-G / 3-1) Or Relevant Qualification	Full-time
BTEC Level 3 National Extended Diploma in Health and Social Care			
3	2 Years	4 GCSEs (A-C / 9-4) Or Relevant Qualification	Full-time

Overview

Our Health & Social Care courses will give you an in-depth study of the health and social care sector, supporting your progression to related degrees or pathways to a successful career. While on the course you'll take part in practical and fun assignments helping you develop a range of skills, techniques, personal abilities and attributes essential for successful performance in working life.

Both courses will enable you to learn about; understanding people's rights and needs, families and carers, working with individuals and providing therapeutic activities. The Level 3 course gives you a deeper understanding of the various aspects of health & social care while applying your learning.

What Will I Study?

Both courses cover a range of relevant topics including:

- ▶ Healthy Living
- ▶ Anatomy and Physiology
- ▶ Understanding Mental Wellbeing
- ▶ Caring for Individuals with Dementia
- ▶ Effective Communication
- ▶ Work Experience in the Sector

Career Pathways

Successfully completing these courses will prepare you for study at a higher level. Level 2 students can progress to Level 3, and Level 3 students can progress to university. Equally, both qualifications will help you find entry-level employment within the sector.

Example careers you can aspire to with these qualifications:

- ▶ Nurse
- ▶ Health or Social Worker
- ▶ Physiotherapist
- ▶ Occupational Therapist
- ▶ Speech Therapist

Proud to be in partnership with



**Find out more
and apply today:**

discoverycollege.co.uk



“The flexibility and guidance I received on my course helped me decide on my career path”

– Emma, BTEC H&SC

Now: Disability Coordinator

Performing Arts

In partnership with

ITALIA CONTI
ASSOCIATES
PLYMOUTH

Level	Duration	Entry Requirements	Type
BTEC Level 3 Extended Diploma in Performing Arts			
3	2 Years	4 GCSEs (A-C / 9-4) Or Relevant Qualification	Full-time

Overview

If you're looking to break into the exciting and diverse performing arts industry then this course is the perfect opportunity for you. Throughout this 2 year course you will develop your talents and skills across a range of modules including; acting, dance, musical theatre and general performing arts. Learning includes highly practical modules combined with theory, which will help expand your performing ability and nurture your development.

The course is delivered in close partnership with Italia Conti Associates Plymouth, who validate course tutors and are affiliated with the prestigious Italia Conti Academy of Theatre Arts, based in London. By successfully completing this course you will be well placed to audition for one of their various Higher Education courses such as BA Acting and BA Musical Theatre. Additionally, there are plenty of extracurricular opportunities available through Italia Conti. These can be accessed through a wide range of performing arts sessions ran at YMCA Plymouth each week and during the school holidays.

What Will I Study?

The course covers a range of relevant topics including:

- ▶ Exploring Performance Styles
- ▶ Performing for an Audience
- ▶ Producing a Collaborative Project
- ▶ Self-promotion and Networking
- ▶ Planning a Career in the Industry
- ▶ Creating Performance Material



Career Pathways

Successfully completing this course can prepare you for further study at University as well as the main Italia Conti School in London. Equally, you can find work within the Performing Arts Sector in a range of entry-level roles.

Example careers you can aspire to with this qualifications:

- ▶ Actor or Dancer
- ▶ Choreographer
- ▶ Stage Director
- ▶ Broadcasting Presenter
- ▶ Arts Administrator

Find out more
and apply today:

discoverycollege.co.uk



"Staff are the most friendly, helpful people you could wish for."

- Kelly, BTEC Student
Now: Dance Instructor

Public Services



COURSES:

Level	Duration	Entry Requirements	Type
BTEC Level 2 First Diploma in Uniformed Protective Services			
2	1 Year	4 GCSEs (D-G / 3-1) Or Relevant Qualification	Full-time
BTEC National Extended Diploma in Uniformed Protective Services			
3	2 Years	4 GCSEs (A-C / 9-4) Or Relevant Qualification	Full-time

Overview

If you're seeking a career in the armed forces or emergency services, then enrolling on this course will enable you to realise that ambition. Through exciting and practical learning, you will develop skills in areas such as leadership, communication and planning, alongside gaining knowledge for the public service sector. Joining this course will prepare you for employment or further study at university.

Both courses will enable you learn essential skills relevant to all types of public service careers and will engage you in active sessions, off-site trips, workshops and opportunities with a wide variety of public service providers, such as the armed forces and emergency services.

What Will I Study?

Both courses cover a range of relevant topics including:

- ▶ Leadership & Teamwork
- ▶ Understanding the Impact of War & Conflict
- ▶ Skills for Outdoor and Adventurous Activities
- ▶ Fitness, Health and Lifestyle
- ▶ Crime and its Effects
- ▶ Working Skills for the Sector



Career Pathways

Successfully completing these courses will prepare you for study at a higher level. Level 2 students can progress to Level 3, and Level 3 students can progress to university. Equally, both qualifications will help you find entry-level employment within the sector.

Example careers you can aspire to with these qualifications:

- ▶ Emergency Services (Police, Fire & Ambulance, etc.)
- ▶ Civil Service
- ▶ Armed Forces (Navy, Army, Air force, etc.)
- ▶ Prison Service
- ▶ Security Services & Agencies

Find out more
and apply today:

discoverycollege.co.uk



*"The staff helped me
to improve skills and
find my passion to
realise my dreams"*

– Luke, BTEC Public Services
Now: Navy Medic

Sport



COURSES:

Level	Duration	Entry Requirements	Type
BTEC Level 2 First Diploma in Sport			
2	1 Year	4 GCSEs (D-G / 3-1) Or Relevant Qualification	Full-time
BTEC Level 3 Extended Diploma in Sport			
3	2 Years	4 GCSEs (A-C / 9-4) Or Relevant Qualification	Full-time

Overview

These exciting courses will enable you to develop your ability in sport and fitness through engaging and practical assignments. You'll improve your skills in coaching, team-building and planning, alongside essential knowledge for the sport and fitness sector.

Both courses will enable you to learn and develop your skills in a wide variety of sports and fitness activities relevant to the sector. Additionally, you'll take part in theory sessions, off-site trips and workshops with professional sports providers.

What Will I Study?

Both courses cover a range of relevant topics including:

- ▶ Health & Fitness for Sport and Exercise
- ▶ Leading Sports Activities
- ▶ Running a Sports Event
- ▶ Sports Injuries
- ▶ Principles of Anatomy & Physiology
- ▶ Practical Sports



Career Pathways

Successfully completing these courses will prepare you for study at a higher level. Level 2 students can progress to Level 3, and Level 3 students can progress to university. Equally, both qualifications will help you find entry-level employment within the sector.

Example careers you can aspire to with these qualifications:

- ▶ Fitness Instructor
- ▶ Leisure and Sports Manager
- ▶ Sports Coach, Instructor & Officials
- ▶ Teaching Professional
- ▶ Physiotherapist
- ▶ Professional Sports Person

**Find out more
and apply today:**

discoverycollege.co.uk



"I thought I'd left it too late to achieve anything, but things turned around when I enrolled at Discovery."

**– Dan, BTEC Sport
Now: Football Academy
Director**



Travel & Tourism

COURSE:

Level	Duration	Entry Requirements	Type
BTEC Level 1/2 First Diploma in Travel & Tourism			
2	1 Year	4 GCSEs (D-G / 3-1) Or Relevant Qualification	Full-time

Overview

BTEC Firsts in Travel and Tourism can help you take your first steps towards a career in retail or business travel. You'll learn essential skills such as business awareness, customer service and understanding destinations in the UK and worldwide.

Guided by our industry expert tutors you'll engage in practical and fun assignments, as well as field-trips and theoretical study related to all aspects of the travel and tourism sector.

What Will I Study?

This course covers a range of relevant topics including:

- ▶ Understanding the Sector
- ▶ Travel & Tourism Destinations
- ▶ Factors Affecting Worldwide Travel
- ▶ Customer Experience and Needs
- ▶ Economic Impact & Industries

Career Pathways

The qualification is equivalent to four GCSEs grade A-C with a pathway to studying on a related Level 3 programme. Additionally you will be equipped for an entry-level career in the sector.

Example careers you can aspire to with this qualification:

- ▶ Hospitality / Hotel Worker
- ▶ Travel Agent
- ▶ Customer Services
- ▶ Sales Advisor
- ▶ Outdoor Activities Coordinator
- ▶ Cabin Crew

Find out more
and apply today:

discoverycollege.co.uk



"I loved every single second of my time at Discovery College"
– Cassidy, BTEC Graduate
Now: University of Plymouth

#FUTURES

Employability Course

If our full-time courses are not right for you, or you are just looking to improve your skills then this 10-week course will give you the qualifications you need while having a great time. The programme runs 3-days a week with Monday at the scenic Lopwell barn where you will take part in team activities, business skills workshops and learn practical skills.

Transport is provided to The Barn on a Monday and a minibus will leave and return from Discovery College.

On a Thursday and Friday you will be based at Discovery College, where you'll be improving your employability skills that will help you land your dream job, or secure your place in further/higher education.



"While on the course I was helped to get a job placement at a cafe which soon led to a paid job offer. This was a really big boost to my self-esteem. I'm now studying a HNC in ICT thanks to the help from my tutors."

- TJ



To find out more or enrol, please contact us or visit discoverycollege.co.uk

Student Life

We believe that your time at Discovery College should be some of the best years of your life - and that's what many of our students say! At Discovery College you'll find a friendly atmosphere which makes your study interesting and exciting, as well as loads of other things to do outside of class. While you're here you can take advantage of our coffee bar complete with pool table and other games, two huge sports halls, 5-a-side court, free gym membership, community garden space and much more. You'll also find plenty of extracurricular clubs to get involved in.

Careers Guidance

We offer careers advice and guidance to ensure all our students are in a great position when making job applications in the future. This includes group and one-to-one sessions helping you plan your next steps. We also offer visits to UCAS exhibitions for those looking to progress to university.

Additional Needs

We are an inclusive college and strive to support all student's needs, if you have any disabilities or additional needs we can discuss this at your interview.



Beyond the Classroom

Whether it's trips to local business, employers or fun days out to local attractions, your time at Discovery College will be full of amazing experiences outside the classroom.

There are a mixture of course specific trips relevant to your learning, as well as college-wide days out and residential trips.

For more details about our trips, please ask your tutor.



College Facilities

▶ ▶ ▶ *Student Canteen*

Includes:

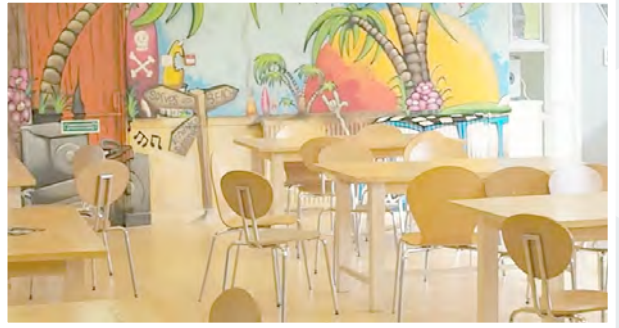
Hot & Cold Meals

Pool table

Games room

Xbox

Foosball table



Student Garden Area ◀ ◀ ◀



A great place to unwind, relax and get some fresh air!

▶ ▶ ▶ *Gym & Sports Facilities*

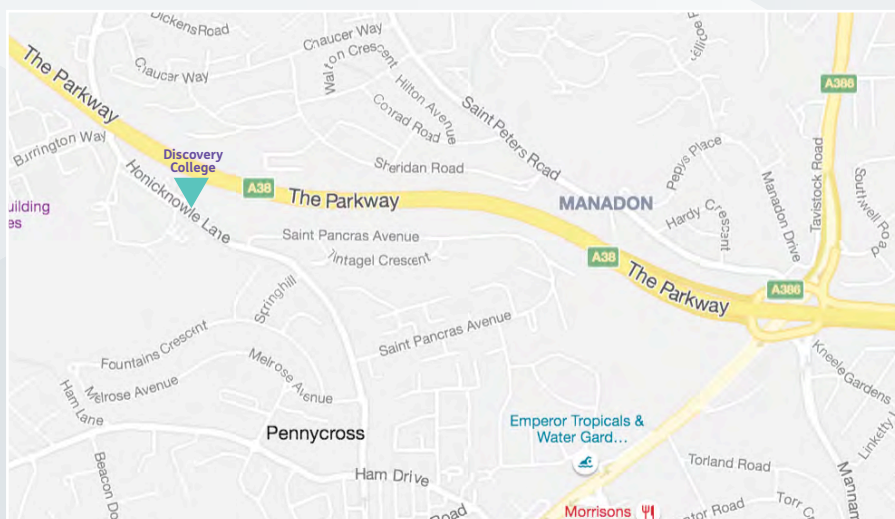
Free YMCA gym membership for students!

Plus, Sports Halls for students to use in break times.



Finding Us

Discovery College is based at YMCA Plymouth on Honicknowle Lane, opposite All Saints Academy Plymouth. We can be reached directly from the 61/62 bus route from town, or via a 10 minute walk from outland road, which the 34 and 101 buses pass through.



Finance & Fees

Course Fees - There are no course fees for Discovery College students aged between 16-18.

Free School Meals - Full time college students who were previously eligible for free school meals will be able to continue to claim meals at college subject to eligibility checks.

Bursary - Full time college students may be eligible for an education bursary to support with any costs associated with their studies, e.g transport, stationary etc.

Your Next Steps

Apply Online

To get started you can complete our simple online application form and we'll get back to you as soon as possible to arrange an interview. Visit discoverycollege.co.uk/apply

Open Days

If you haven't already visited Discovery College, then be sure to register for one of our Open Days or book a drop-in visit.

Sign up now at: discoverycollege.co.uk/info

Contact us

If you'd like further advice or have any questions, our team are happy to talk. Please either phone or email us via the details below.

E info@discoverycollege.org.uk

T 01752 761011



DISCOVERY COLLEGE

PART OF YMCA PLYMOUTH



Best Education Project Winner, National Youth Matters Awards 2019

“The staff at Discovery College are so amazing! It’s an awesome learning environment, and they are some of the best people I’ve had the pleasure of meeting. Without them I wouldn’t be where I am today.”

– Matthew, BTEC Sport
Now: Fitness Instructor

Discovery College, Honicknowle Lane, Plymouth, PL5 3NG
discoverycollege.co.uk | T 01752 761011 | Charity No. 1066919



Training & Education



Health & Wellbeing



Family Work

YMCA Plymouth is an education, health & families charity, serving young people & our community. We are guided by a friendly & personable approach, where all people can belong, contribute & thrive.